

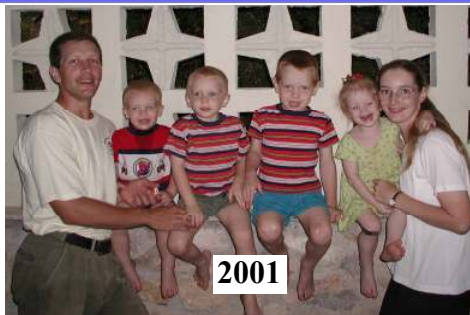


Tim and RoseAnne Bower

Missionaries in Haiti



1994



2001



2002



2003



2005



2006



2007



2008



2010



2012



2014



2016

Tim and RoseAnne Bower - *missionaries in Haiti*

WALLONDRY CAMPUS MINISTRIES

Tim and RoseAnne Bower - Missionaries in Haiti

Tim's Daily Ministry Obligations

1. Seminary (administration, staff, discipline, curriculum, grades, testing, schedules)
2. Radio (administration, programming decisions, staffing issues, scheduling, electricity)
3. Adult Literacy School (administration, staff, discipline, curriculum, grades, testing, schedules)
4. Church Plants (meetings with pastors, financial support and accountability, activity planning, transportation issues, church land and building problems, legal matters)
5. Campus Church (pastoral duties, evangelism and visitation)
6. Campus Maintenance (electricity, water, paint, welding, mechanical, carpentry)
7. Legal (lawyer, government paperwork, licenses, permits, visas, contracts, health care - ONA, workmans comp - OFATMA, insurance, TMS taxes, IRDD taxes, property taxes)
8. Jesus film ministry (Wednesday evangelism and publicity, Friday film projection)(scheduling, finances, transportation, staffing)

RoseAnne's Daily Ministry Obligations

1. Homeschool - BJU curriculum
2. Baking and cooking from scratch - monthly food supplies purchased: 100 lbs rice, 100 lbs sugar, 100 lbs flour, 4 gallons vegetable oil, 25 lbs detergent powder, 4 gallon cans milk powder, 40 lb box chicken legs, 3 gallons shortening.
3. Ladies Vocational School (administration, staff, discipline, curriculum, grades, testing, schedules)
4. Dorcas Ladies (RoseAnne) - visitation, humanitarian (food and clothing distribution), cleaning (sick or disabled church members homes), food preparation for church activities

Tim and RoseAnne Bower - *missionaries in Haiti*

WALLONDRY CAMPUS MINISTRIES

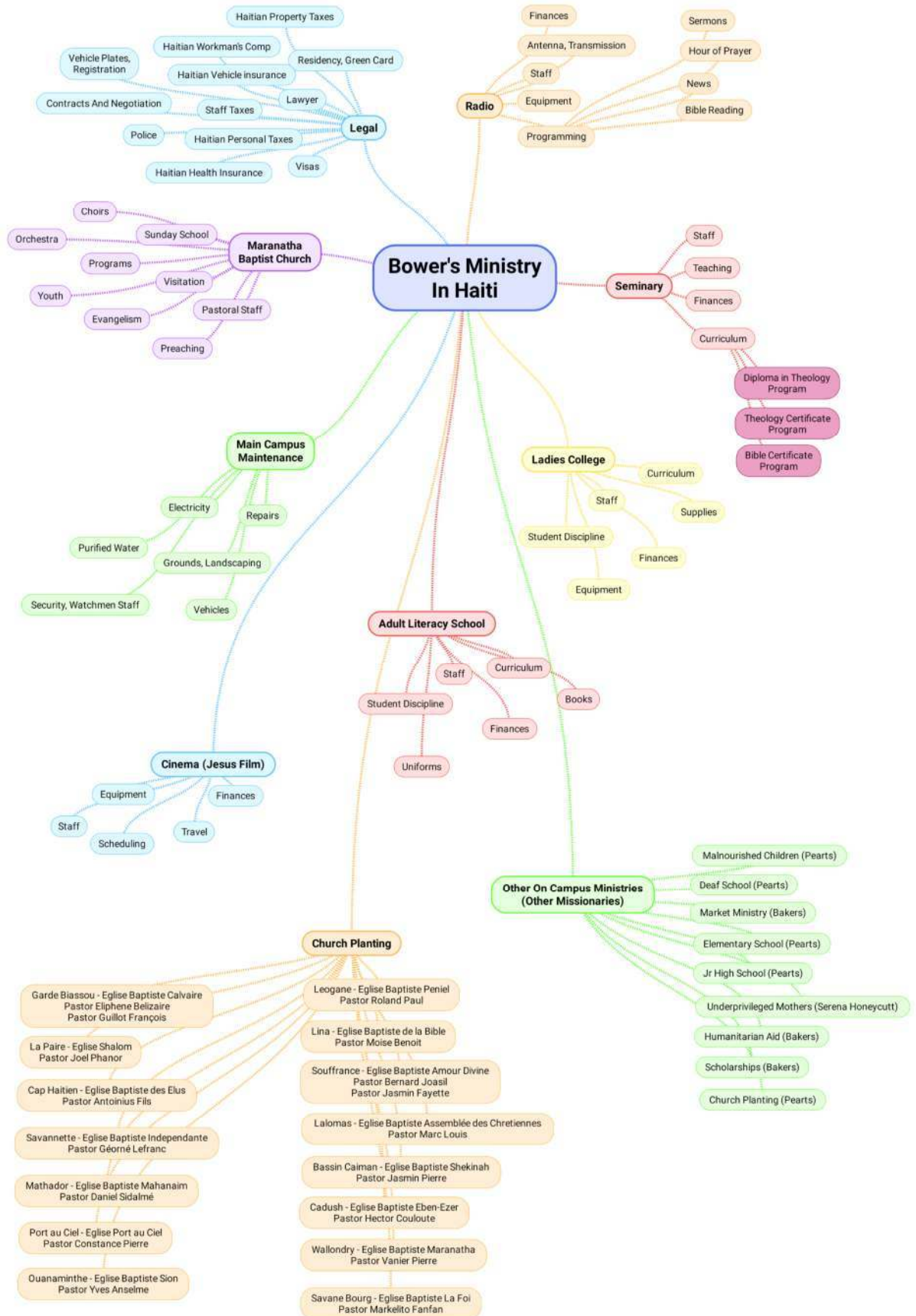
Summer 2017 Ministry Goals and Objectives

1. Critical long term and short term ministry planning.
 - Evaluate current ministry growth.
 - Set long term ministry (five year) objectives.
 - Set short term (one year) ministry objectives.
 - Re-evaluate ministry activities in respect to new objectives.
2. Doctorate classes
Need: Our three haitian seminary professors already have a bachelors degree. I need to stay sharp. I need to upgrade my personal credentials.
3. French language classes or personal study
Haitian Creole is the spoken language of 100% of the population. We are fluent in Creole already. French is the academinc language used for teaching in schools. Teaching in Creole is considered sub-standard. Our French proficiency varies, mine is about 70%.
4. Translation Projects
 - Bible story book written by John Walsh.
 - A study on the book of Revelation, written by Tim Bower
 - A study on the eschatology, written by Tim Bower
5. Writing Sunday School books, with 50 lessons per book.
 - Leson Okazyonèl pou Lekòl Dimanch
 - Prensip Batis yo
 - Prensip Fondamantal Lafwa yo
6. Digitally reformatting each of my 15 books I've paper published in Haiti, to make them available on Kindle for free.
7. Miscellaneous
 - Catch up on finances
 - Catch up on Prayer Letters and communication
 - Upgrade web page
 - Prayer card

Tim and RoseAnne Bower - *missionaries in Haiti*

WALLONDRIY CAMPUS MINISTRIES

Bower's Ministry in Haiti Overview



Tim and RoseAnne Bower - *missionaries in Haiti* ***WALLONDRY CAMPUS MINISTRIES***

Maranatha Radio (4VEM, 88.5FM)

1. Hardware and equipment

- 2 AAREFF emitters
- 2 AAREFF amplifiers
- DBX compressor
- Pyle equalizer
- Mackie 12 channel mixer
- Mackie 8 channel mixer
- Asus EEE 1005HA laptop
- HP 6455b laptop
- 2 dipole 5/8 wavelenth antennas
- Miscellaneous cables, microphones, and speakers



2. Software - Zara, Audacity, Adobe Audition

- ### **3. Professional Staff**
- Director Emmanuel Joseph
 - Programmer Socrate Paul
 - Programmer Obed Docteur
 - Programmer Dieudson Ulysse

4. Programming (sermons, Bible reading in Creole, news weather, etc.)

5. Music - French and Creole conservative music

- ### **6. Recording - Prayer programs**
- Pastor Mehu Bolancy
 - Pastor Chavanne Toussaint
 - Sr. Franceline Joseph

7. Legal and government obligations

- ### **8. Electricity requirements**
- EDH (Electricité d'Haiti)
 - Generator (gasoline, diesel)
 - Solar power



Tim and RoseAnne Bower - *missionaries in Haiti*
WALLONDRY CAMPUS MINISTRIES

Maranatha Baptist Church

Staff:

Full time pastors - Senior Pastor Tim Bower
Pastor Vanier Pierre
Part time pastors - Fritz Costumé - Evangelism
Edy Noel - Music)

Current Members - 202

Average Sunday AM attendance - 220-250

Finances: Pastor's salaries paid by the Bowers

Services:

Morning Prayer Service - 5am, Mon-Fri
Sunday School and Morning Worship - 7:00-8:30 am
Sunday Morning Worship Service 8:30-11:00 am
Sunday Evening Service - 4pm
Wednesday Prayer meeting - 4pm

Choirs and singing groups:

Church Choir
Youth Choir
Children's Choir
Orchestra
Men's groups:
Cheour d'Homme
Women's groups:
New Singers,
Gospel Singers
Mixed groups: Fiancé, Choeur des Anges, Troupeaux



Tim and RoseAnne Bower - *missionaries in Haiti*
WALLONDRY CAMPUS MINISTRIES

Maranatha Theological Seminary

Programs:

1. **Diploma in theology program** (full time, four years, 42 classes, 126 credit hour curriculum)
2. **Theology certificate program** (Saturdays, four years, 24 classes, 72 credit hour curriculum)
3. **Bible certificate program** (three classes per year during school vacation, 10 classes total, 30 credit hour curriculum)

Personnel: Staff of 6 people

- Missionary Tim Bower
- Missionary Harry Peart
- Missionary Keith Baker
- Pastor Vanier Pierre
- Pastor Rodelin Phanet
- Pastor Bolancy Mehu



Participants:

Students enrolled in 1st program - 6

Students enrolled in 2nd program - 15

Average number of students in each 3rd program class - 160

Finances:

Funded by the Bowers, Bakers, and Pearts together



Tim and RoseAnne Bower - *missionaries in Haiti*
WALLONDRY CAMPUS MINISTRIES

Maranatha Support Staff

Watchmen (24 hour security) - funded by Bowers

Jean Charles Paulius
Benjamin Jovane
Joseph Samuel
Ulyss Dieudonné
Jean Eliasard
Beaubrun Arnold
Desir Jn Rene
Noel St Youle

Janitorial / Cleaning Staff - funded by the Bowers and the Pearts

Sr. Edulte Petit-Choute
Sr. Limard Jean
Sr. Calenne Joseph
Sr. Saint Helene Jean Noel

Purified Water (public service)

Staffed by the watchmen
Open 6days per week; Mon-Sat; 7am-11am, 1pm-4pm
Minimal expenses

Maranatha Adult Learning School

Objective:

To teach those who are illiterate how to read and write so that they can learn to read the Bible for themselves.

Director: Sr Franceline Joseph

Teachers:

Bruno Joseph
Eliphene Belizaire
Fredelin Pierre

Students

45 students enrolled

Schedule:

Open 5 day per week; Mon-Fri; 2pm-5pm

Finances:

Funded by the Bowers

Tim and RoseAnne Bower - *missionaries in Haiti*
WALLONDRY CAMPUS MINISTRIES

Maranatha Vocational School

Objective:

To teach pastors and church people a vocation that will help them make a living. The vocational school is a support ministry for the indigenous church planting effort.

Founder: RoseAnne Bower

Director: Pastor Vanier Pierre

Teachers:

Anette Toussaint (full time)

Elisena Belizaire (full time)

RoseMarie Lazare (full time)

Vanier Pierre (part time)

Millienne Fayette (part time)

Denise Pierre (part time)

Emmanuel Joseph (part time)

Obed Docteur (part time)



Students

30 students enrolled

Schedule:

Couture (Sewing) - Open 5 day per week; Mon-Fri; 2pm-5pm

Informatique (Computers) - Open Saturdays

Finances:

Funded by the Bowers

Jesus Film Ministry

Objective:

To evangelize unreached areas with the gospel and to encourage churches in hard to reach areas. We go into an area a week before we plan to show the Jesus Film and spend a day evangelizing the area with the help of the local pastor. After publicity a week prior, we show the Jesus Film in a church, out in the street, in an open field, or anywhere we can draw a large crowd of people. The Jesus Film projection ministry is a support ministry for the indigenous church planting effort.

Staff:

Jean Prophete Desir (part time)
Dieudonne Ulysse (part time)
Constance Pierre (part time)
Menard Sadil (part time)

Attendance

300 - 600 people

Finances:

Funded by the Bowers

Tim and RoseAnne Bower - missionaries in Haiti

CHURCH PLANTS

Our 1st Church Planted in Haiti

Date Started: - - - before 1999

Location: - - - - - Lina, St Raphael

Google Coordinates: 19.480140, -72.208346

Pastor: - - - - - Moise Benoit

Church Name: - - - Eglise Baptiste de la Bible
Lina Bible Baptist Church

Bible Training: - - Maranatha Theological
Seminary

Ministries: - - - - - Church, Elementary School

Our Involvement:

Church planted by Missionary Evan Shaffer
We give monthly financial support
Maranatha Seminary graduate
(Diploma in Theology)
Church construction (2001)



Lina, St Raphael
Eglise de la Bible
Pastor Moise Benoit

Tim and RoseAnne Bower - missionaries in Haiti

CHURCH PLANTS

Our 2nd Church Planted in Haiti

Date Started: - - - 2003

Location: - - - - - Wallondry, St Raphael

Google Coordinates: 19.419670, -72.201278

Pastors: - - - - - Timothy Bower
Vanier Pierre

Church Name: - - - Eglise Baptiste Maranatha
Maranatha Baptist Church

Bible Training: - - Maranatha Theological
Seminary

Ministries: - - - - - Church, 5 Schools

Our Involvement:

We planted the church in 2004
We give monthly financial support
Maranatha Seminary graduate
(Vanier - Diploma in Theology)
Tim is pastor of the church
Land purchase (2002)
Church construction (2009)



Wallondry, St Raphael
Eglise Baptiste Maranatha
Pastor Vanier Pierre
Pastor Timothy Bower

Tim and RoseAnne Bower - missionaries in Haiti

CHURCH PLANTS

Our 3rd Church Planted in Haiti

Date Started: - - - 2006

Location: - - - - - Savane Bourg, St Raphael

Google Coordinates: 19.432508, -72.187108

Pastors: - - - - - Markelito Fanfan

Church Name: - - - Eglise Baptiste La Foi
Faith Baptist Church

Bible Training: - - Maranatha Theological
Seminary

Ministries: - - - - - Church, Elementary School

Our Involvement:

We planted the church in 2005

We give monthly financial support

Maranatha Seminary graduate
(Diploma in Theology)

Land purchase (2007)

Church construction (2008)



Savane Bourg, St Raphael
Eglise Baptiste La Foi
Pastor Markelito Fanfan

Tim and RoseAnne Bower - missionaries in Haiti

CHURCH PLANTS

Our 4th Church Planted in Haiti

Date Started: - - - 2007

Location: - - - - - Garde Biassou, St Raphael

Google Coordinates: 19.375664, -72.226504

Pastors: - - - - - Eliphene Belizaire
Guillot François

Church Name: - - - Eglise Baptiste Calvaire
Calvary Baptist Church

Bible Training: - - Maranatha Theological
Seminary

Ministries: - - - Church

Our Involvement:

We planted the church in 2007

We give monthly financial support

Maranatha Seminary graduate

(Diploma in Theology)

Land purchase (2009)

Church construction (2010)



Garde Biassou, St Raphael
Eglise Baptiste Calvaire
Pastor Eliphene Belizaire
Pastor Guillot François

Tim and RoseAnne Bower - missionaries in Haiti

CHURCH PLANTS

Our 5th Church Planted in Haiti

Date Started: - - - 2008

Location: - - - - - La Paire, Dondon

Google Coordinates: 19.540188, -72.236894

Pastors: - - - - - Joel Phanor

Church Name: - - - Eglise Baptiste Shalom
Peace Baptist Church

Bible Training: -----

Ministries: - - - - - Church

Our Involvement:

We planted the church in 2008

No present involvement

Land rental (2008-2013)

Church construction (2010)
(temporary structure)



La Paire, Dondon
Eglise Baptiste La Paix
Pastor Joel Phanor

Tim and RoseAnne Bower - missionaries in Haiti

CHURCH PLANTS

Our 6th Church Planted in Haiti

Date Started: - - - 2009

Location: - - - - - Bassin Caiman, St. Raphael

Google Coordinates: 19.511899, -72.230962

Pastors: - - - - - Jasmin Pierre

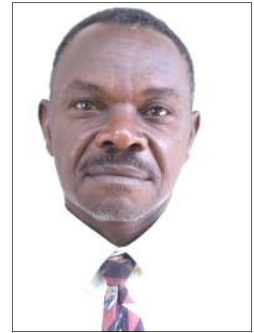
Church Name: - - - Eglise Baptiste Shekinah
Shekinah Baptist Church

Bible Training: - - Maranatha Theological
Seminary

Ministries: - - - - - Church

Our Involvement:

We planted the church in 2008
We give monthly financial support
Maranatha Seminary graduate
(Diploma in Theology)
Land purchase (2010)
Church construction (2011)



Bassin Caiman, Dondon
Eglise Baptiste Shekinah
Pastor Jasmin Pierre

Tim and RoseAnne Bower - missionaries in Haiti

CHURCH PLANTS

Our 7th Church Planted in Haiti

Date Started: - - - 2010

Location: - - - - - Cadush, Quartier Morin

Google Coordinates: 19.647615, -72.180805

Pastors: - - - - - Hector Coulouste

Church Name: - - - Eglise Baptiste Eben-Ezer
Ebenezer Baptist Church

Bible Training: - - Maranatha
Theological
Seminary

Ministries: - - - - Church

Our Involvement:

We planted the church in 2009

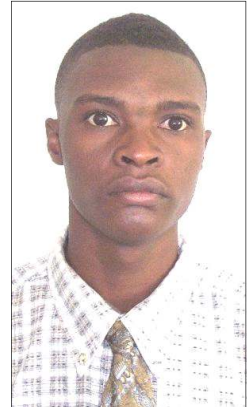
Monthly financial support

Maranatha Seminary graduate

(Diploma in Theology)

Land purchase (2009)

Temporary church construction (2017)



Cadush, Quartier Morin
Eglise Baptiste Eben-Ezer
Pastor Hector Coulouste

Tim and RoseAnne Bower - missionaries in Haiti

CHURCH PLANTS

Our 8th Church Planted in Haiti

Date Started: - - - 2012

Location: - - - - - Leogane, Port au Prince

Google Coordinates: 18.527792, -72.598445

Pastors: - - - - - Roland Paul

Church Name: - - - Eglise Baptiste de la Grace
Grace Baptist Church

Bible Training: - - Maranatha Theological Seminary

Ministries: - - - - Church

Our Involvement:

We planted the church in 2012

(after the Jan 2010 earthquake)

We give monthly financial support

Maranatha Seminary graduate

(Diploma in Theology)

Land purchase (2013)

Church construction (2014)



Leogane, Port au Prince
Eglise Baptiste de la Grace
Pastor Roland Paul

Tim and RoseAnne Bower - missionaries in Haiti

CHURCH PLANTS

Our 9th Church Planted in Haiti

Date Started: - - - 2013

Location: - - - - - Mathador, Dondon

Google Coordinates: 19.509029, -72.253425

Pastors: - - - - - Daniel Sidalmé

Church Name: - - - Eglise Baptiste Mahanaim
Manahaim Baptist Church

Bible Training: - - Maranatha Theological
Seminary

Ministries: - - - - - Church

Our Involvement:

We planted the church in 2013
We give monthly financial support
Maranatha Seminary graduate
(Theology Certificate program)
Land purchase (2014)
Church construction (2015)



Mathador, Dondon
Eglise Baptiste Mahanaim
Pastor Daniel Sidalmé

Tim and RoseAnne Bower - missionaries in Haiti

CHURCH PLANTS

Our 10th Church Planted in Haiti

Date Started: - - - 2015

Location: - - - - - Dubout, Quartier Morin

Google Coordinates: 19.664608, -72.094990

Pastors: - - - - - Rodelin Phanet

Church Name: - - - Eglise Baptiste Shiloh
Shiloh Baptist Church

Bible Training: - - Université Chretienne du Nord

Ministries: - - - - - Church

Our Involvement:

We planted the church in 2015

We give monthly financial support

Professor at Maranatha Theological Seminary

Land purchase (2017 - in progress)

Church construction (2018 - future)



Dubout, Quartier Morin
Eglise Baptiste Shiloh
Pastor Rodelin Phanet

Tim and RoseAnne Bower - missionaries in Haiti

CHURCH PLANTS

A church associated with our ministry in Haiti

Date Started: - - - 2003

Location: - - - - - Soufriere, St. Raphael

Google Coordinates: 19.446127, -72.205394

Pastors: - - - - - Bernard Joasil

Jasmin Fayette

Church Name: - - - Eglise Baptiste Amour Divin
God's Love Baptist Church

Bible Training: - - Maranatha Theological Seminary

Ministries: - - - - Church, Elementary School

Our Involvement:

We did not plant this church
We give no monthly support
Maranatha Seminary graduates
(Diploma in Theology)
Land purchase (2013)
Church construction (2014)



*Located at the
foot of the
devil's cave in
St. Raphael.*



Soufriere, St Raphael
Eglise Baptiste Amour Divin
Pastor Bernard Joasil
Pastor Jasmin Fayette

Tim and RoseAnne Bower - missionaries in Haiti

CHURCH PLANTS

A church associated with our ministry in Haiti

Date of Association: 2009

Location: - - - - - Bas Savannette, Pignon

Google Coordinates: 19.387545, -72.113877

Pastors: - - - - - Georné Lefranc

Church Name: - - - Eglise Baptiste Independante
Independant Baptist Church

Bible Training: - - Maranatha Theological Seminary

Ministries: - - - - - Church

Our Involvement:

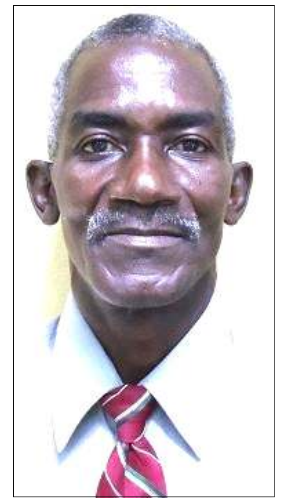
We did not plant this church

We give no monthly support

Maranatha Seminary graduate

(Theology Certificate program)

Land purchase (2014)



Bas Savannette, Pignon
Eglise Baptiste Independante
Pastor Georné Lefranc

Tim and RoseAnne Bower - *missionaries in Haiti*

CHURCH PLANTS

A church associated with our ministry in Haiti

Date of Association: 2015

Location: - - - - - Ouanaminthe

Google Coordinates: 19.541746, -71.729671

Pastor: - - - - - Yves Anselme

Church Name: - - - Eglise Baptiste Sion
Zion Baptist Church

Bible Training: - - Université Chrétienne du Nord

Ministries: - - - - Church

Our Involvement:

- We did not plant this church
- We do not give monthly financial support
- Land purchase (2016)
- Church construction (2017)



Ouanaminthe (Nord-Est)
Eglise Baptiste Sion
Pastor Yves Anselme

Tim and RoseAnne Bower - missionaries in Haiti

CHURCH PLANTS

A church associated with our ministry in Haiti

Date of Association: 2011

Location: - - - - - Cap Haitien

Google Coordinates: 19.738047, -72.164311

Pastors: - - - - - Antoinius Fils

Church Name: - - - Eglise Baptiste des Elus
Baptist Church of the Elect

Bible Training: - - Maranatha Theological Seminary

Ministries: - - - - - Church

Our Involvement:

We did not plant this church

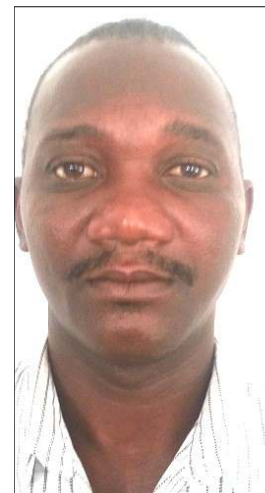
We give no monthly support

Maranatha Seminary graduate

(Theology Certificate program)

Land purchase (2015)

Church construction (2016)



Cap Haitien (Nord)
Eglise Baptiste des Elus
Pastor Antoinius Fils